

# List of US Military Specifications woven by Bally Ribbon Mills

## **MIL-W-4088 (MIL-W-27265 for condition "R") Nylon Woven Webbing**

<b>Type</b>	<b>Width</b>	<b>Tensile (lbs.)</b>	<b>Bally Ribbon Mills (Pattern #)</b>		
			<b>Class 1</b>	<b>Class 1a</b>	<b>Class 2</b>
Type 1	9/16"	500	8962	4000	4364
Type 1a	3/4"	600	8962	4000	4364
Type 2	1"	600	8962	4000	4364
Type 3	1-1/4"	800	8962	4000	4364
Type 4	3"	1800	8962	4000	4364
Type 6	1-23/32"	2500	9015	4019	4365
Type 7	1-23/32"	6000	9886	4020	4366
Type 8	1-23/32"	4000	9381	4021	4367
Type 8a	3"	6300	9381	4021	4367
Type 8b	2"	4500	9381	4021	4367
Type 8c	2-1/4"	5300	9381	4021	4367
Type 9	3"	9000	1594	4022	4368
Type 10	1-23/32"	9500	6203	4023	4369
Type 12	1-23/32"	1200	8962	4000	4364
Type 13	1-23/32"	7000	1411	4024	4370
Type 14	1/2"	1200	9383	4025	4371
Type 15	2"	1500	1230	4026	4372
Type 16	1-23/32"	4500	9418	4027	4373
Type 17	1"	2500	8941	4028	4374
Type 18	1"	6000	7717	4029	4375
Type 19	1-3/4"	10000	2634	4030	4376
Type 20	1"	9000	2343	4031	4377
Type 21	1-1/4"	3600	9279	4032	4378
Type 22	1-23/32"	9500	1510	4033	4379
Type 23	1-1/8"	12000	2799	4034	4380
Type 24	1-15/16"	5500	1466	4035	4381
Type 25	1"	4500	1409	4036	4382
Type 26	1-3/4"	15000	1625	4037	4383
Type 27	1-23/32"	6500	1493	4038	4384
Type 28	2-1/4"	8700	1620	4039	4385

Note: Class 1 (critical use / shuttle loom) Class 1a & 2 (non-critical use / needle loom)

Note: MIL-W-27265 is Condition "R" Treated

## MIL-T-5038 Nylon Woven Tape

<u>Type</u>	<u>Width</u>	<u>Tensile (lbs.)</u>	<u>Bally Ribbon Mills (Pattern #)</u>		
			<u>Class 1</u>	<u>Class 1a</u>	<u>Class 2</u>
Type 2	1" - 2"	900 - 1700	7440	4461	4386
Type 3	3/8" - 1-1/2"	200 - 850	7407	4462	4622
Type 4	1/2" - 1-1/2"	550 - 1500	7408	4463	4388
Type 5	9/16"	500	7866	4464	4389
Type 6	3/4"	425	8275	4465	4390

## MIL-W-5625 Nylon Woven Tubular

<u>Width</u>	<u>Tensile (lbs.)</u>	<u>Yards Per Spool</u>	<u>Bally Ribbon Mills (Pattern #)</u>
3/8"	950	490 - 500 yards	8444-3/8" .
1/2"	1000	390 - 400 yards	8444-1/2" .
9/16"	1500	315 - 325 yards	8444-9/16" .
5/8"	2250	250 - 260 yards	8444-5/8" .
3/4"	2300	190 - 200 yards	8444-3/4" .
7/8"	3100	150 - 160 yards	8444-7/8" .
1"	4000	115 - 125 yards	8444-1" .

## MIL-W-17337 Nylon Woven (Medium Weight) Webbing

<u>Width</u>	<u>Tensile (lbs.)</u>	<u>Thickness</u>	<u>Bally Ribbon Mills (Pattern #)</u>	
			<u>Class 1</u>	<u>Class 2</u>
1"	1200	.038 - .050	6703	4067
1-1/2"	1800	.038 - .050	6703	4067
2"	2200	.038 - .050	6703	4067
3"	3200	.038 - .050	6703	4067

## Additional Mil-Specs

<u>Nylon</u>	<u>Nylon</u>	<u>Nomex</u>	<u>Kevlar</u>	<u>Polyester</u>	<u>Award Ribbon</u>
MIL-T-2283E	MIL-T-5608G	MIL-W-38282A	MIL-W-87127	MIL-T-48260	MIL-DTL-11589
MIL-T-5666D	MIL-T-6134C	MIL-W-38283A	MIL-W-87130	MIL-R-87017B	
MIL-T-8363B	MIL-W-9049D	MIL-W-38328B			
MIL-W-21773	MIL-T-26089	MIL-W-43685B	<u>Glass</u>	<u>Polypropylene</u>	
MIL-W-27657B	MIL-T-27736A	MIL-W-81116B	MIL-Y-1140H	MIL-W-44049A	
MIL-T-43664B	MIL-W-43668C	MIL-T-43709B	MIL-C-20079G		
MIL-W-83144A		MIL-W-81528			

Note: Class 1 (critical use / shuttle loom) Class 1a & 2 (non-critical use / needle loom)





G0002  
Type I  
Mil-T-43566  
3/8" - 3"  
Cotton



G0002  
Type I  
Name Tape  
1"  
Cotton



G0004  
Type IIA  
Mil-W-530  
1/2" - 2"  
Cotton



G0007  
Type III  
Mil-W-530  
3/4" - 2"  
Cotton



G0034  
Type I, II, III  
Mil-W-5665  
7/16" - 1 1/4"  
Cotton



G0302  
Type I  
Mil-T-43566  
3/4" - 2"  
Polyester



G0306  
Type IIB  
Mil-W-530  
1"  
Polyester



G0009  
Type II  
Mil-W-44049  
3/4" - 4"  
Polypropylene



G0017  
Type I  
Mil-W-44049  
3/8" - 3"  
Polypropylene



G0037  
Type XVII  
Mil-W-5665  
1"  
Cotton



G0041  
Type III  
Mil-T-5038  
3/8" - 1 1/2"  
Nylon



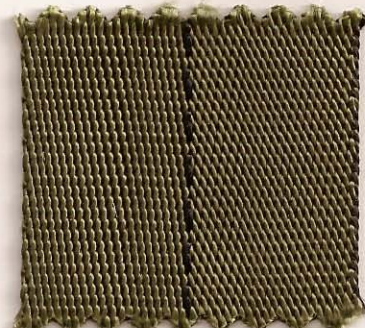
G0029  
Mil-W-17337  
1" - 2"  
Nylon



G0042  
Type IVA  
Mil-T-5038  
1"  
Nylon



G0033  
Type IA  
Mil-W-4088  
3/4"  
Nylon



Type VIII C  
Mil-W-4088  
1 23/32"  
Nylon



Type 1 Mil-W 4088 9/16" Nylon

**YKK**

Little Parts. Big Difference.™

Fastening Products Group



## BACKPACK WEBS



#12304, 1"



#20614, 1"



#30112, 1"



#30120, 1"

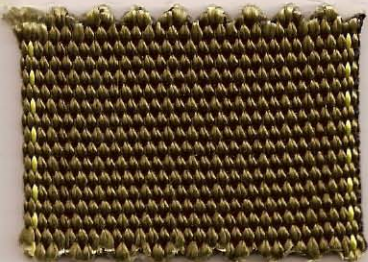


#30148, 1/2"

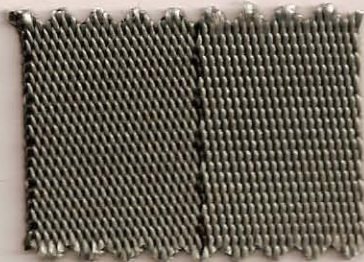


#30234, 3/4"

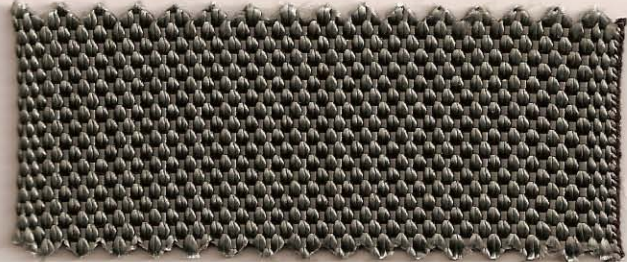
## CLIMBING • PARACHUTE • SAFETY WEBS • SLINGS



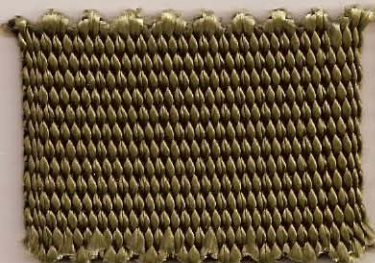
#4088T7, 1 23/32"



#4088T8, 1 23/32"



#4088T9, 3"



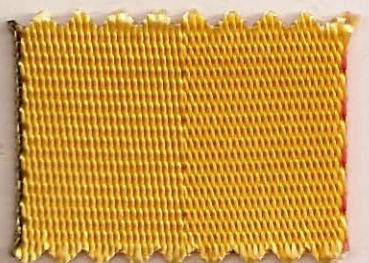
#4088T10, 1 23/32"



#4088T12, 1 23/32"



#4088T13, 1 23/32"



#4088T16, 1 23/32"



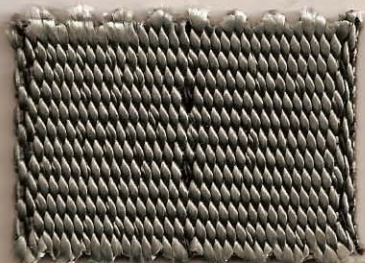
#4088T17, 1"



#4088T18, 1"



#4088T19, 1 3/4"



#4088T22, 1 23/32"



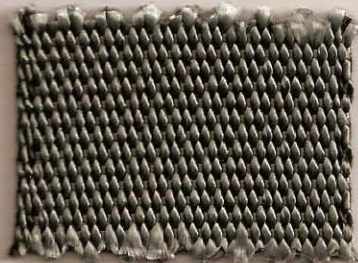
#5625, 3/4"



#4088T24, 1 15/16"



#4088T25, 1 3/4"



#4088T27, 1 23/32"





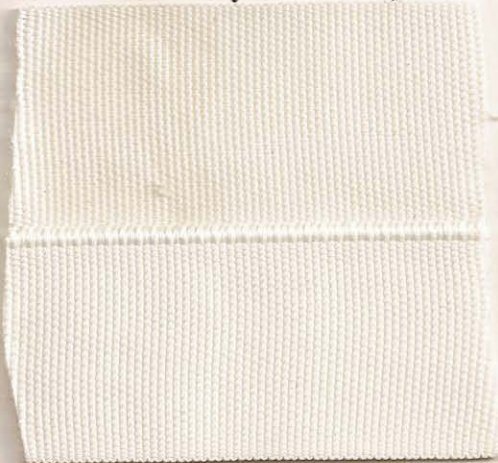
**Your Problem Solvers for Over 75 Years !**

## **SPECIALTY PRODUCTS**

**2461-7/16" Nomex**



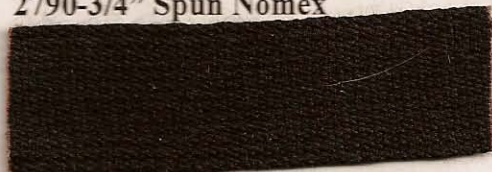
**1748-2 3/8" Polyester T-Tape**



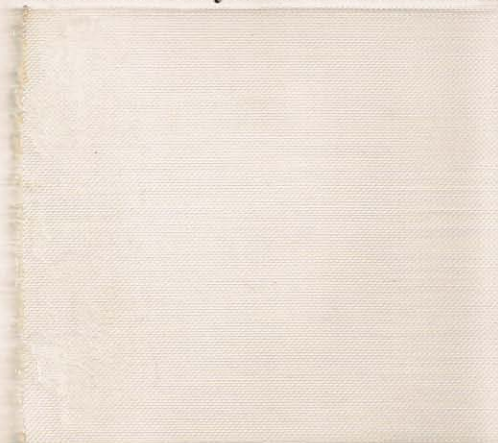
**6142-1" Spectra**



**2790-3/4" Spun Nomex**



**6182-2 1/2" Polyester Monofilament**



**8476-1/4" Teflon**



**8688-3" Polyester**



**4290-1 1/2" Natural**



**1883-1/2" Gore-Tex**



**6758-1/8" Nylon**



Many different patterns, widths and colors are available. Please inquire.



Solutions to Design Challenges for over 75 Years!

## NOMEX-Heat Resistance



9476 - 1/4"



9476 - 1/2"



9476-1"



1154-5/8" Natural



9650-3/4" Natural



9981-1 3/4" Natural



1569-1"



4707-1" Black Spun



2853-3/4" Black Spun



2818-3" Black Spun



Military, Aerospace, and Fire Protection Applications

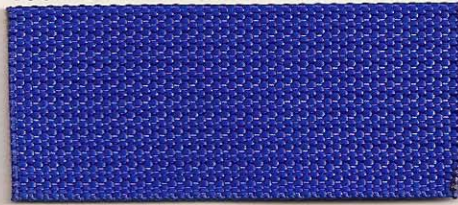


Solutions to Design Challenges for over 75 Years

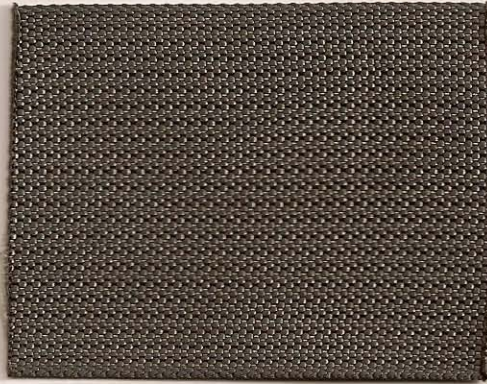
## MILITARY SPECIFICATIONS

MIL-W-17337-Nylon Pack Webbing

4067-1"



4067-2"



MIL-T-5608 Nylon Parachute Tape

7129-5/8"

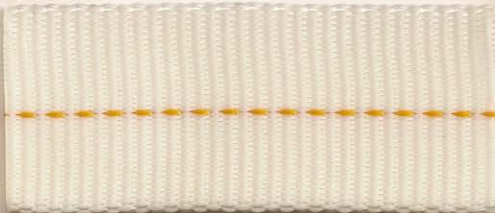


7128-5/8"



MIL-W-5625 Tubular Nylon

8444-1"

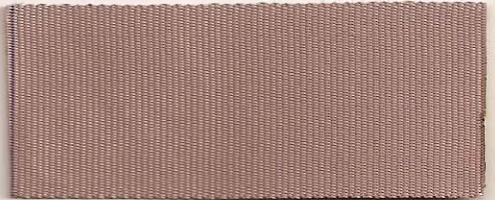


MIL-43685 Nomex Binding

1154-5/8"



9476-1"



Mil-T-87130 Kevlar Webbing

1991-1" Type 6, Class 9



1659-1 1/8" Type 7, Class 6



MIL-W-43668 Texturized Nylon

4311-1"

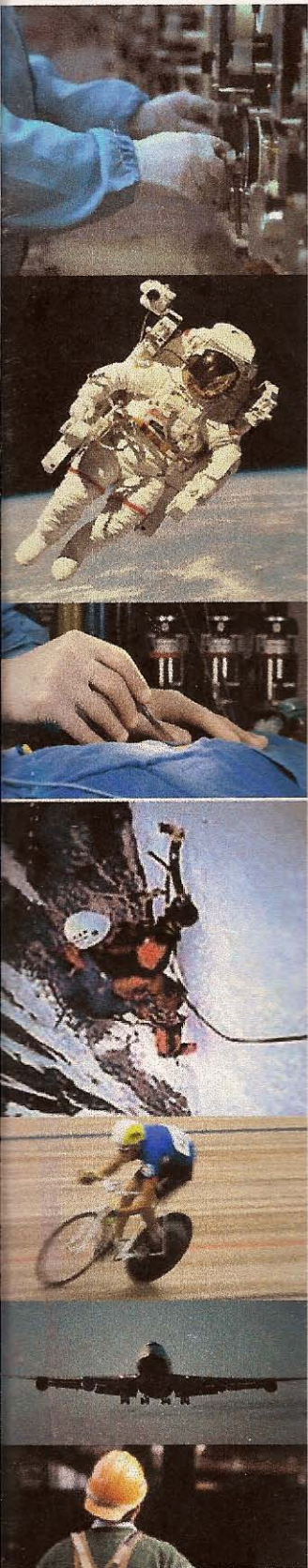


Class 1, Class 1a, and Class 2 available. Many variations, widths and colors are available: Please Inquire



# Solutions to Design Challenges for over 75 Years!

## KEVLAR-High Strength Heat Resistant



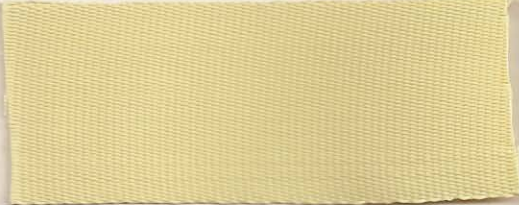
1997-9/16" Natural Lt. 'R'



1989-1/2" Natural Lt. 'R'



2491-1" Natural Lt. 'R'



2175-1 3/4" Natural Lt. 'R'



4290-2" Natural



1991-1" Natural Lt. 'R'



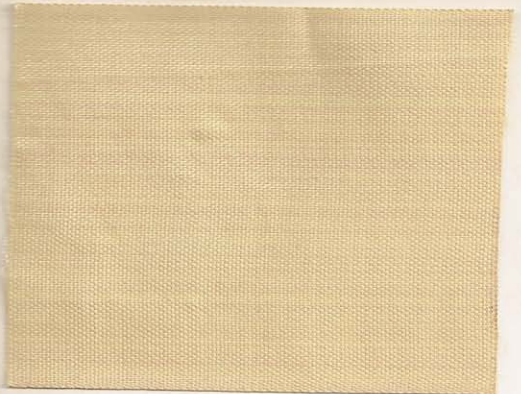
4280-1 3/4" Natural



2509-1 3/4" Natural Lt. 'R'



2059-2" Natural



Commercial & Mil-Spec Available. Many more items available. Please inquire.



Solutions to Design Challenges for over 75 Years!

# MILITARY SPECIFICATIONS

MIL-T-5038

Type II

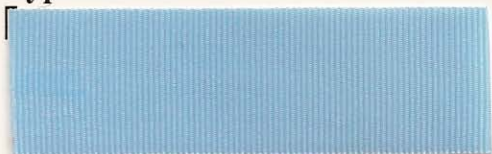


MIL-W-4088

Type I



Type III



Type VIII



Type IV



Type XVII



Type V



Type XXIV



Type VI



Type XXV



Class 1, Class 1a, and Class 2 available. Many variations, widths, and Colors are available. Please Inquire



Your Problem Solvers for Over 75 Years !

## SAFETY

2853-3/4" Black Nomex



2790-3/4" Black Nomex



4405-23/32" Black Nylon



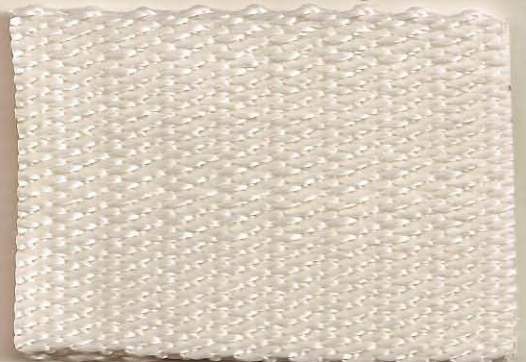
4289-1" Royal Blue Nomex/Kevlar



4280-1 3/4" Kevlar



6581-1 3/4" Natural Polyester  
Slotted-Fall Arrest Systems



4290-2" Natural Kevlar



4639-2" Natural Black Kevlar



Many different patterns, widths and colors are available. Please Inquire.



# MILITARY SPECIFICATIONS

MIL-T-5038

Type II



Type III



Type IV



Type V



Type VI

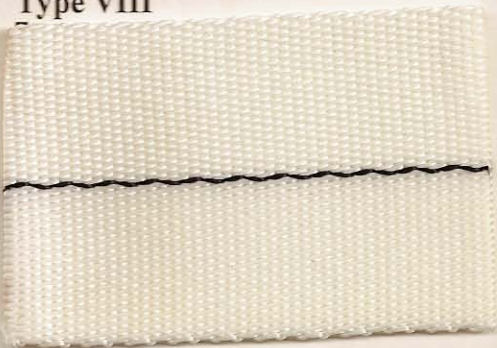


MIL-W-4088

Type I



Type VIII



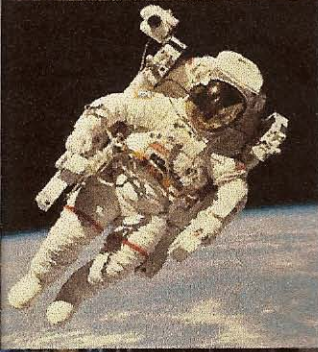
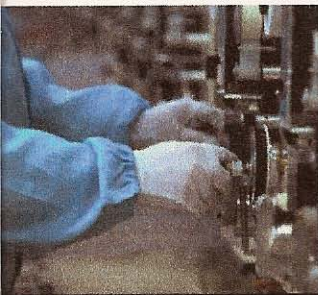
Type XVII



Type XXIV



Type XXV



Class 1, Class 1a, and Class 2 available. Many variations, widths, and Colors are available. Please Inquire



CLIMBING • PARACHUTE • SAFETY WEBS • SLINGS



#4088T28, 2 1/4"



#30430, 1"



#30462, 1"

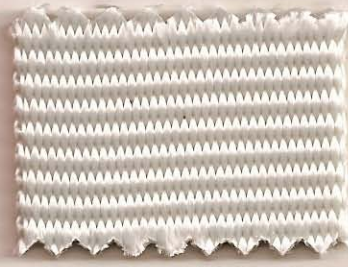
CARGO • AIRCRAFT SAFETY BELTS • RESTRAINING HARNESSSES • EQUIPMENT BELTS



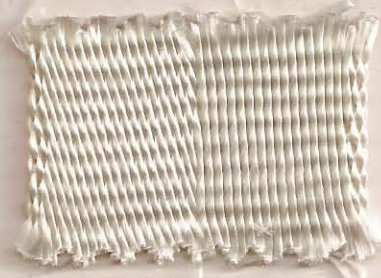
#23223-1, 1 3/4"



#23223-7, 1"



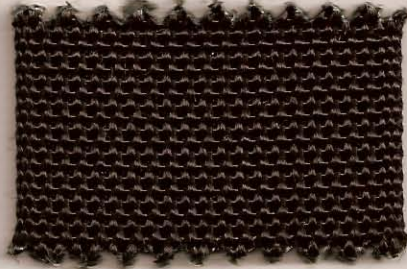
#25361 (AA - 55242), 1 3/4"



#27657 (3718), 1 23/32"



#32330, 2"



#33002, 2"



#43668T3 (AA - 55301), 1"





# POLYPROPYLENE WEBBING



Style #84  
Light Weight



Style #90  
Heavy Weight



Style #1601  
Herringbone



Style #N101  
Nylite



Style #2001  
Ribbed



Jacquard  
Custom Logo

## STOCK COLORS



104 Bone



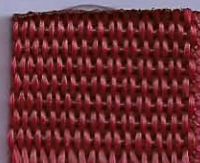
001 White



106A Jute



205 Orange



210 Burgundy



212 Red



314 Yellow



325 Gold



327 Brt. Gold



002 Black



406 Silver



422 Dk. Grey



509 Kelly



526A Dk. Grn.



527 Forest



531 Olive



215A Teal



8008 Turquoise



603 Royal



604 Pacific



615 Lt. Blue



620 Navy



703 Brown



801 Purple



827 Brt. Purple



802 Rainbow

WIDTHS: 1/2" to 4"  
Call for specific availability.



# POLYPROPYLENE PRODUCT INFORMATION

Style#	Description	Widths	Tensile Strength	Average Thickness
#84	Light Weight	1/2", 3/4", 1", 1 1/2", 2" & 3"	1" = 600 lbs.	.040
#N101	Nylike	3/4", 1", 1 1/2", 2"	1" = 600 lbs.	.055
#90	Heavy Weight	1/2", 3/4", 1", 1 1/2", 2" & 3"	1" = 800 lbs.	.065
#1601	Herringbone	3/4", 1", 1 1/2", 2"	1" = 350 lbs.	.035

## STOCK COLORS

### BIAS BINDINGS

Broadcloth	Brush Tricot
Percalé	Carpet Mesh
Tricot	15 Den Tricot
Satin	40 Den Tricot
Lycra	15-1000 Den Nylon
Felt	Fire Retardant Finishes
Taffeta	Cotton
Mesh	Polycotton
Nonwoven	Polyester

### FEATURING SONIC BIAS SEAMING

Almost invisible & seamless

### REFLECTIVE FABRICS & TRIMS

Excel stocks a full line of retro-reflective safety trims, tapes and fabrics as well as PVC reflective tapes and Hi-Viz grosgrain ribbon with reflective striping up to 4 1/2" width.

### ELASTIC BRAIDS, WEBS AND CORDS

From 1/8" to 8" Elastic braid and webbing. Shock cord from 3/32" to 3/4". Draw-cord elastic, fold-over and brushed elastic in stock.

### HOOK & LOOP FASTENERS

Over 20 stock colors from 1/2" to 6": Specializing in neon safety colors and fire retardant. Sew, Pressure, Sensitive, Heat Activated, Solvent Activated, Custom Fabricated Straps, Back to Back, Cut to Length and Mated to name a few of our capabilities. Also polyester hook and loop in stock. Coins from 1/4" to 1 7/8". Generic mushroom hook now available up to 4".

### ZIPPERS

For every application: molded plastic, aluminum, coil, brass, antique brass, zipper chain and sliders (stock 4.5, 5, 8 & 10). Large stock inventory of colors and sizes.

### OUTDOOR UMBRELLA & CUSHION BINDINGS

Vinyl and vinyl laminate umbrella bindings, as well as dye to match umbrella binding tapes for outdoor furniture or marine applications. Cushion ties also stocked in over 30 colors. Stocking 7/8" Sunbrella® acrylic center fold in several colors.

### PLASTIC HARDWARE

Large inventory of plastic buckles, toggles, side release, D-rings and snap hooks.

**We are able to meet all your sewing thread requirements, including: spun polyester, cotton core, polyester core, bonded nylon & polyester, monofilament; Kevlar® and Nomex®**



# MEDIUMWEIGHT WEBBING

**#W-309** – A strong, inexpensive cotton web for a wide range of uses; ties on tractor covers, baby swings, straps on cement finishers and roofers knee pads.

Colors: Natural and Black -  
Colors by special order.

Widths: 5/8" only  
Put up: 36 yard rolls



**#600** – This is a commercial version of MIL-W-530, Type 2A. Useful where the rigid qualities of specification goods are not needed.

Colors by special order.  
Widths: 3/4" through 2"  
Put up: 100 yard rolls



**#W-230D** – A spun polyester version of Type 2A. Used for straps where sun resistance is important, as on boat or jeep tops. Makes strong handles. Can be printed on.

Widths: 1" only



**#MIL-W-530, Type 2A** – A cotton webbing for orthopedic restraints, tote bag handles and sports equipment.

Colors by special order.  
Widths: 1/2" through 2"



**Type 3** – A cotton web made to MIL-W-530. An old classic web used for tough straps, shoulder pad hinge web.

Colors by special order.  
Widths: 1" through 3"  
Put up: 50 yard rolls





# POLYPROPYLENE WEBBING

---

**#704-48** – Lightweight filament polypropylene web. A strong inexpensive webbing for tote bag handles, life vests (UL approved), luggage. Wide range of colors.  
Put up: 100 yard rolls or cut and fused to length  
Widths: 1/2" through 3"



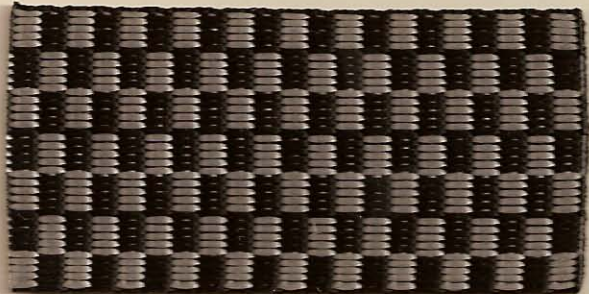
**#704-58** – Heavyweight filament polypropylene web. A heavier version of 704-48. Wide range of colors.  
Widths: 1/2" through 3"



**#704-88** – Herringbone weave filament polypropylene web. Good either as a binding or strap. Wide range of colors.  
Widths: 1/2" through 3"



**#Checkerboard Web** – Special order.



**High Tenacity Web** – A good utility web with a 5,000 lb. break. Special order.



**704-28** – A mix of left over polypropylene yarn colors. Colors and patterns always vary. Inexpensive, good for use as straps or belts where web is not exposed.





# BRAIDED ELASTICS (AUTOMOTIVE AND SPECIAL USES)

**#4002** – 1" - Nylon covered, neoprene rubber elastic for automotive trade. Very high tension. Conforms to FMVSS-302 (auto spec).



**#4625** – A 5/8" version of 4002. Also conforms to FMVSS-302.



**#7821** – 3/4" - A strong map pocket, tire cover elastic. Covered with polypropylene yarn.



**#25-43** – A polypropylene covered elastic for goggles. A good elastic for reasonable cost.



**#33-34** – 17/32" - A nylon covered, neoprene rubber elastic. High tension, conforms to FMVSS-302.



**#5750** – 3/4" - This polyester covered dry cleanable elastic is available in widths ranging from 1/4" through 1".



**#2625** – 5/8" - A fold-over elastic for bowl covers, shower caps or other elastic binding requirements. Can be made in widths from 7/16" through 1".





# BRAIDED ELASTICS

Made in widths from 1/8" through 1", from natural and synthetic coverings and rubbers. Colors available by special order. These samples are representative, not comprehensive. See us for your special uses.

**#7710** - 1/8" - Soft stretch elastic.



**#501** - 1/2" - Cotton/synthetic; available in widths 1/4" through 1".



**#2501** - 1/2" - Polyester; available in widths 1/4" through 1".



**#758** - 3/8" - "Cat Collar Elastic".



Tubular polypropylene with neoprene rubber; conforms to FMVSS-302



#919





# BRAIDED ELASTIC CORD (SHOCK CORD)

Elastic or shock cords are made in two general qualities. The first is designed for those applications where precise diameter, precision length of stretch and abrasion are secondary to price. This is accomplished principally by the use of a definite weight of rubber threads of varying sizes and rubber compounds. The second quality is produced of a definite number of uniform threads of like rubber braided with single or double covers, and can be held to much closer diameter, stretch and tension tolerances. In selecting a cord from those shown below, careful consideration should be given to the manufacturing and usage demands to be put upon it. These are but a few of the standard cords available and none of the specials are shown.

Elastic cords are manufactured in diameters up to 1".

**#350** – A light, inexpensive, short stretch elastic cord. Can be barbed to be used on display cards or Halloween masks. Put up on 2 lb. spools, (yield = apx. 360 yds/lb)



**#9101** – A good cotton elastic cord where stretch is not too exact. Used in plastic furniture covers. Nominal 1/8" diameter. Put up on 144 yard spools. Color: Natural only.



**#MIL-C-5651C** – Type 1 - Government spec double covered elastic cord. Put up on 500 foot spools.



**#16930** – 3/16" - A Polypropylene single covered elastic cord. Good for all utility purposes. Can be made in a variety of colors, but is stocked in red/white. Put up on 300 foot spools.



**#16931** – 3/16" - A cotton version of the above. A standard for camping trailer covers for years. Long life under normal usage. Put up on 500 foot spools.



**#7715** – A regular number. Used as a handle on fishing nets and luggage tags. Nominally 1/8" diameter. Put up on 144 yard spools.



**#16922** – A 1/4" diameter cotton covered utility cord used in snowmobile covers. Good strong tension. Put up on 500 foot spools.





# SYNTHETIC APRON TIES (BUTCHER/BARTENDER/DISPOSABLE APRONS)

**#2704C** – A texturized nylon braid.  
Strong tie because the bulk will hold the knot and yet untie easily. Used for bartender and meat cutter aprons. Also used for hiking boot laces.

Colors: White and standard athletic colors

Put up: 1000 yard spools or cut & fused to length



**#F725** – this is an inexpensive, effective tie, made with textured nylon.

Colors: White and colors

Put up: Spools or cut & fused to length



**#3001** – A 7/16" polyester flat woven apron tie.

Colors: White only

Put up: Festooned or cut & fused to length



**#3208** – A flat tubular nylon braid ideal for hospital or laundry ties.

Put up: Spools or cut & fused to length



**#9400** – The classic nylon tie tape for aprons. 150 lb. break strength.

Colors: White

Put up: 72 yard rolls, 1000 yard spools or cut & fused to length

